



ULYX®

Long-length motorised cantilever gate



Cantilever gate



Frame section:
120 x 120



Motorised



Height: 1.80 m / 2.00 m /
2.20 m / 2.50 m
Opening width: 6 to 16 m



Post section:
120 x 120 and 150 x 150
mm

| | | | |
|--------------------|-------------------------|--------------------|--------------------|
| 6005 Moss green | 7016 Anthracite grey | 7035 Light grey | 7030 Stone grey |
| | 9005 Jet black | 9010 Pure white | |

Durable and Effective

- Strong, stylish structure
- Robust motor for heavy-duty use
- Operates smoothly and quietly
- Steel rack and pinion drive system

Serenity

- Delivered in two parts for opening widths over 11 m, for easy transport and handling.
- Single-piece guide post including the control board column, the motor system and the track wheel to ensure accurate positioning.

Secure and Inconspicuous

- The drive motor is built into the column to protect the system from being tampered with, bad weather conditions, and vandalism.

Reliability and easy set-up

- Pre-wired and factory-tested components.
- Easy wiring: the motor system and control board cabinet are centralised in the guide post.
- Plug & Play: Single connection allowing to hook-up the receiving post equipment to the control logic (no end-to-end connection).

Convenience

- Gate with no ground rail: clear opening, no jolting for vehicles.
- Free circulation during the works.
- Easily adapted to new and existing sites.

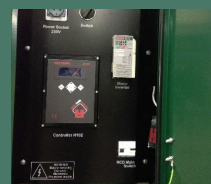
Product highlights



Quick connection



Motor built into the control board column



Control card with display

General characteristics

- **Finish:** Zinc-epoxy + polyester*
- **Option: Protect + coating *:**
 - For the most corrosive areas.
 - Compatible with all colours.

*According to the DIRICKX warranty conditions.

Colours

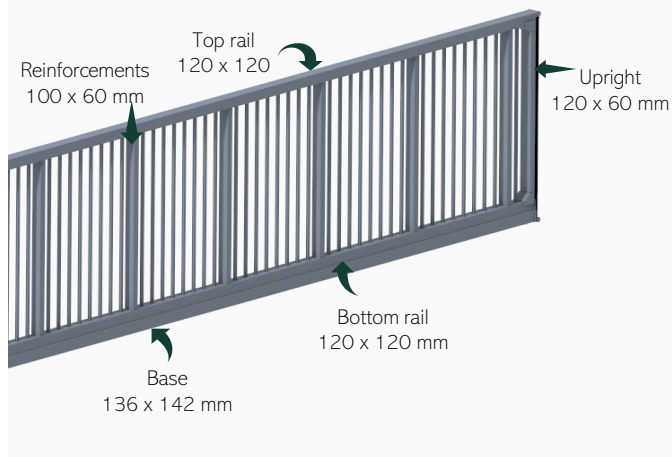


- 6 standard colours.

Option, with surcharge:

- 200 RAL colours
- Matt and textured coatings

Technical Data

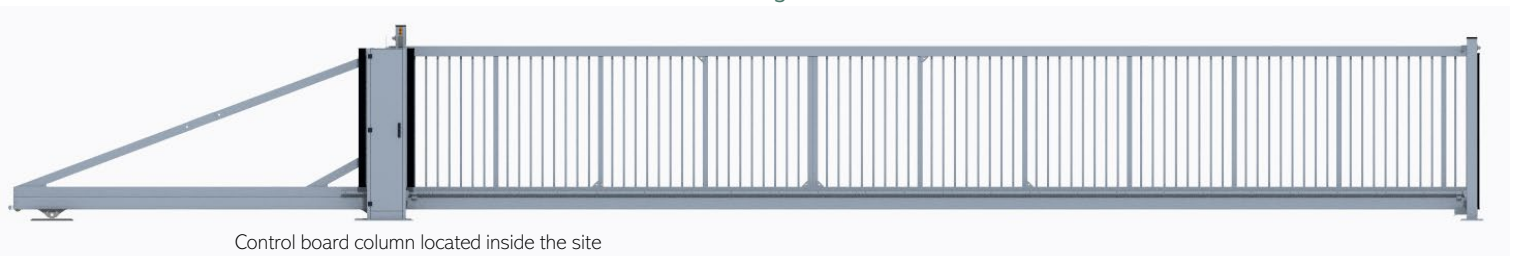


Infill: Non-overstanding bars 25 x 25 mm

Crossbars: 50 x 10 mm diagonal, for opening widths over 13 m



For improved mechanical resistance of the leaf, **the beam is composed of a bottom rail welded to the base over the entire length on both sides.**



Control board column located inside the site

| Nominal height | Nominal opening (m) | 6.00 | 7.00 | 8.00 | 9.00 | 10.00 | 11.00 | 12.00 | 13.00 | 14.00 | 15.00 | 16.00 | |
|----------------|---------------------|--------------------|------|------|-------|-------|-------|-------|-------|-------|-------|-------|-------|
| | 1.80 | Actual opening (m) | 6.02 | 7.02 | 8.02 | 9.02 | 10.02 | 11.02 | 12.02 | 13.02 | 14.02 | 15.02 | 16.02 |
| | 2.00 | Leaf length (m) | 8.40 | 9.85 | 11.05 | 12.58 | 13.38 | 15.78 | 17.08 | 18.38 | 19.68 | 21.23 | 22.73 |
| 2.20 | | | | | | | | | | | | | |
| 2.50 m | | | | | | | | | | | | | |

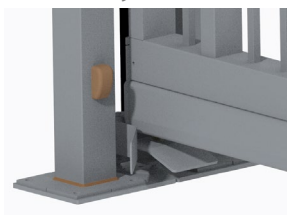
| | | | | | | | | | | | | |
|---------------------------------|--|------|------|------|-------|-------|-------|-------|------------------|-------|-------|--|
| Beam section | Base 136 x 142 x 6 mm + bottom rail 120 x 120 x 4 mm | | | | | | | | | | | |
| Frame section | Top rail 120 x 120 x 4 – Uprights 120 x 60 x 3 mm - Reinforcements 100 x 60 x 3 mm | | | | | | | | | | | |
| Space below leaf | 130 mm | | | | | | | | | | | |
| POST SECTIONS | | | | | | | | | | | | |
| Nominal opening | 6.00 | 7.00 | 8.00 | 9.00 | 10.00 | 11.00 | 12.00 | 13.00 | 14.00 | 15.00 | 16.00 | |
| Guide post | 120 x 120 x 4 mm | | | | | | | | 150 x 150 x 5 mm | | | |
| Receiving post | 120 x 120 x 4 mm | | | | | | | | 150 x 150 x 5 mm | | | |
| Secondary receiving post | 120 x 120 x 4 mm | | | | | | | | | | | |

Installation



For opening widths over 11 m, the gate is delivered in 2 parts to be assembled on site.

- 3 sets of detection cells:
- light vehicles on the outside + inside
 - heavy vehicles on the outside

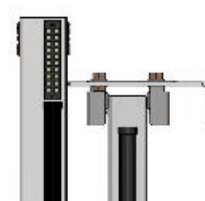


Posts and wheel screwed on the same base plate

Control board column at gate height



The angle adjustment element allows to adjust the deflection to adapt to the terrain



Surface-mounted LED dash panel area lighting and flashing lights. Additional lighting on the receiving post, for opening widths over 13 m.

Drive motor

- Opening and closing speed: maximum **16 m/ minute**.
- **Operates quietly.**
- Designed for **intensive use**.
- Slows at the start and end of the cycle so that it operates smoothly.
- Disengagement is simple and user-friendly.
- Motor built into the control board column.
- Three-phase motor via a built-in converter.
- Mini-receiver included (compatibility with remote controls).
- Pre-wiring.



| | |
|-------------------|-----------------------------|
| Gate power supply | Single-phase 230 Volts |
| Motor power | 0.75 KW |
| Motor voltage | Three-phase motor 230 Volts |
| Speed variation | Variation in frequency |
| Protection rating | IP54 |
| Temperature range | - 20°C to +55°C |



* 2-YEAR DIRICKX GUARANTEE FOR MOTORISATION:

DIRICKX offers a 2-year guarantee on its gate/point of access motor system to customers who are certified installers. This guarantee covers both the supply of the motor and the electronic board in the event of a failure or malfunction. All other parts are not covered by the guarantee. This guarantee does not replace the legal obligation to enter into a maintenance contract.

Control logic



Security:

- Two levels of operating configuration:
 - Direct access for the user
 - Access using a password for the manufacturer and maintenance manager
- Preset factory settings
- Main breaker for the cabinet
- Power socket to connect the tools

Practical and scalable:

- Clear and intuitive reading
- Space available in the column to add control accessories, access control, alarm, etc.



Options and accessories

- Post section (guide or receiving) can be increased up to 150 x 150 mm
- Toothed rail painted in the same colour as the leaf
- Large choice of control accessories (remote control, magnetic loop, videophone, intercom, digicode, badge reader, smart unit, etc.)
- Bollards for control accessories
- Fence fastening bracket



Toothed rail



Smart unit



Remote control



Digicode / proximity reader



Intercom

Extras

- Civil engineering configurator at www.dirickx.com
- Installation and operation and maintenance manuals + simplified wiring manual delivered with the gate.
- Commissioning.
- Maintenance contract.
- Repair.



*Details in the "GUARANTEES, STANDARDS & REGULATIONS" tab of the catalogue.



Please call our service number for any requests:

0800 73 07 58

From Monday to Friday from 8:30 am to 6:00 pm, experts are available to provide a precise diagnosis for quality assistance.