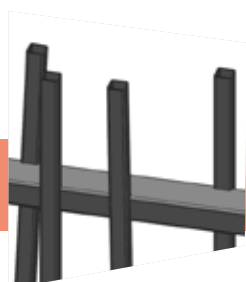


EXALT® K-RÉ

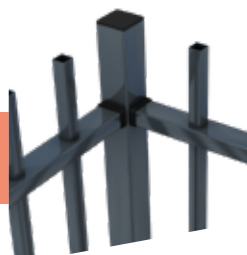
RAILING



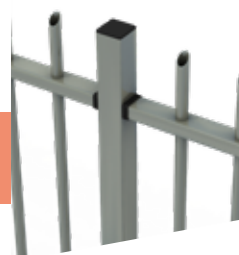
Thanks to its square bars, EXALT® K-ré boasts a contemporary and original look that will suit any architectural style.



Bars partially integrated into the bracing rail



Invisible connections



Round or square posts

EASY INSTALLATION

- Installation in forward sequence,
- Steps can be precisely adjusted with undrilled posts,
- Angle management made possible thanks to the connection systems.

SECURITY

- Protection that is subtle and stylish,
- Screws are inaccessible after installation.

STYLE

- The modern, dynamic design will enhance the entire site,
- Straight and slanted bars, for a sense of rhythm and originality,
- Round or square posts to fit with the chosen architectural style,
- Compatible with decorative sheet metal for an even more stylish, customised finish,
- Slotted assembly with invisible connections.

●○○○○
COST-EFFECTIVE

●○○○○
SECURITY
LEVEL

●●●●●
DESIGN

●●●●○
EASY
INSTALLATION

**HOUSING
COMPLEXES**



PUBLIC AREAS



**SERVICE
SECTOR SITES**



GENERAL CHARACTERISTICS

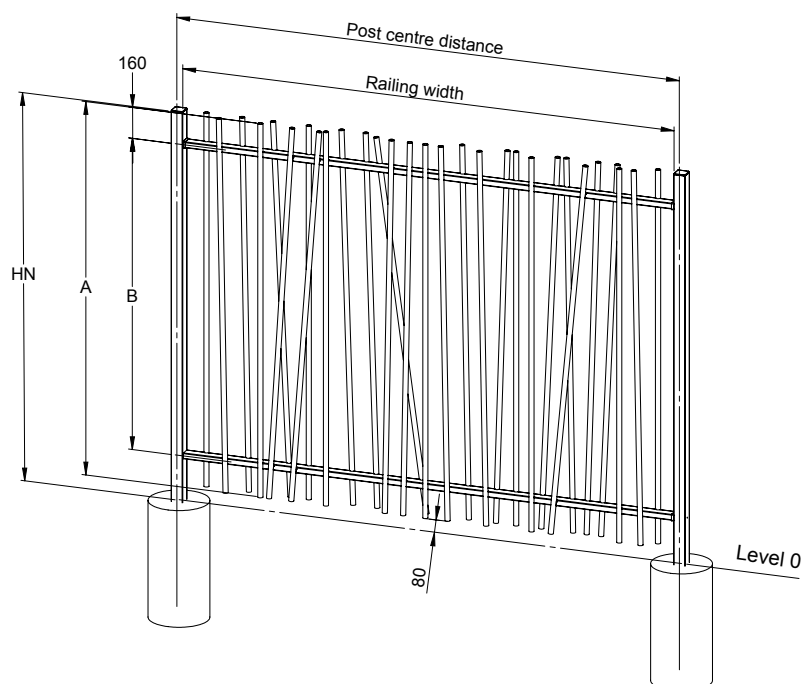
- Heights: 1.00 to 2.00m.
- Railings:
 - Rail: 50 × 30mm,
 - Hollow overstanding bars: 20 × 20mm,
 - Partially integrated into the rail (patent pending),
 - Spacing between bars: 110mm max.,
 - Flat cut bars.
- Posts:
 - 60 × 60mm square posts or 60mm dia. round posts,
 - embedded or base-plated, drilled or undrilled.
- Connection accessories (4 per post):
 - Steel "U",
 - Self-tapping screw,
 - Square or round post end cap.

COLOURS

- 6 standard colours:
 - Green 6005, Grey 7016, Grey 7030, Grey 7035, Black 9005,
 - White 9010.
- 200 RAL colours.
- Anti-corrosion treated Sendzimir steel finish with polyester coating.
- Optional matt and textured coatings.
- "Protect +" coatings for the most corrosive areas.

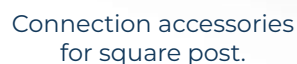
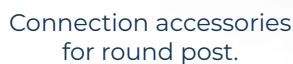


TECHNICAL INFORMATION



	Railings									Posts				
Nominal height (m)	Railing width (m)	Post centre distance (m)	Rail (mm)		Bars x sections (mm)	Number of bars	Bar length (mm)	Space below railings (mm)	Weight (kg)	Post section (mm)	Embedded post		Base-plated post	
											Length (m)	Weight (kg)	Length (m)	Weight (kg)
1.00	2.54	2.60	50 × 30	Top and bottom over-standing bars	20 × 20	29	920	80	31	60 × 60 or dia.60	1.50	6.40	1.00	5.00
1.20							1120		36		1.70	7.20	1.20	5.70
1.50							1420		44		2.00	8.40	1.50	6.80
1.80							1720		51		2.30	9.60	1.80	7.90
2.00							1920		56		2.50	10.40	2.00	8.60
			2.70	11.40										

TECHNICAL INFORMATION



- Caps for the bars,
- Additional connection accessories (in case parts need to be cut to size).

→ **Assembly is achieved by slotting railings into the posts.**

→ **Embedded:**
Must be embedded to a depth of 50cm.

→ **Base-plated:**
Suitable for installation on a wall or paved ground, and avoids boring into concrete.

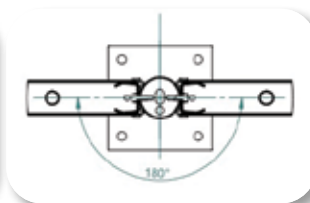
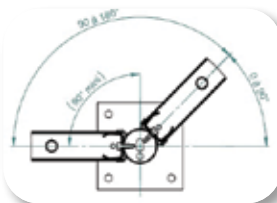
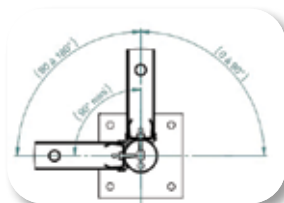


→ **Stepped:**
Use longer, undrilled posts. The connection system allows for adjustments to the millimetre.

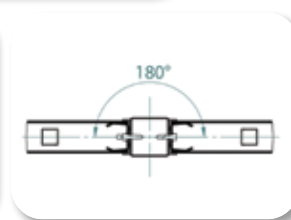


→ **Angle management:**

- On round post: angle of 90° to 180° ,



- On square post:
angle of 50° to 180° .



EXALT® K-RÉ RAILING

MATCHING OPTIONS

→ Matching gates



ALLIX cantilever or sliding gates



ALLIX single-leaf swing gates



ALLIX double-leaf swing gates

ADDITIONAL PRODUCTS

→ LEXIE decorative sheet metal

